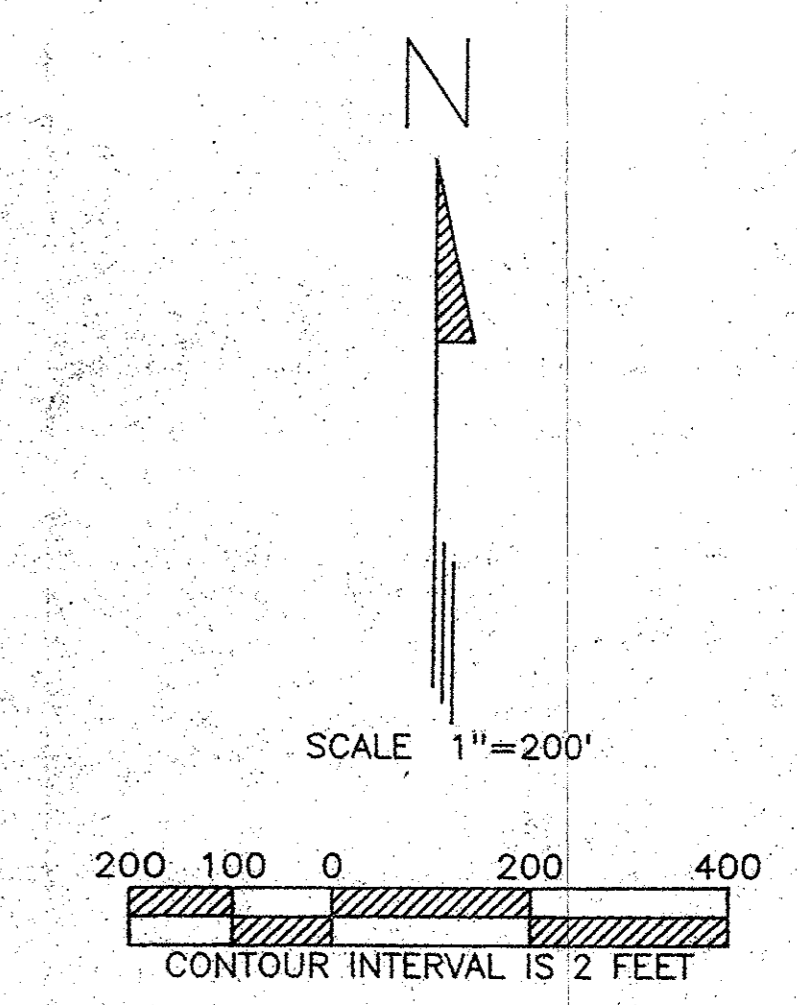


		9		
		16		
		21	22	23
		29	28	27
		26	25	24
		32	33	34
		35	36	25
		5	4	3
		2	1	

SECTION 22
KEY MAP



LEGEND

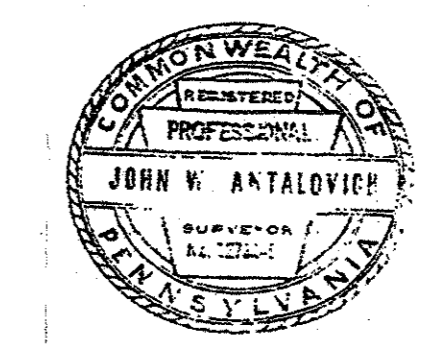
- 100-Year Floodplain Boundary within Study Area
- - - FEMA Floodplain Boundary
- △ Concentration Point

MMLA
800 E. Williams Rd.
Suite 110
Tempe, AZ 85710
Tel: (520) 292-2300
Fax: (520) 292-1290

**FIGURE 5
EXISTING CONDITIONS DRAINAGE MAP
FOR
TOHONO O'ODHAM NATION - SAN XAVIER DISTRICT
MASTER DRAINAGE STUDY
PHASE I - PANHANDLE AREA**

PROJECT NO: 9815-05-05
DATE: 10/19/98
4 of 4
Engineering • Planning • Environmental • Surveying • Water Resources

NOTE:
THIS MAP WAS PREPARED BY KUCERA INTERNATIONAL INC., WILLOUGHBY, OHIO, FROM AERIAL PHOTOGRAPHY TAKEN NOVEMBER 15, 1994. ELEVATIONS ARE BASED ON THE NATIONAL GEODETIC VERTICAL DATUM OF 1929. GRID TICKS ARE BASED ON THE ARIZONA STATE PLANE COORDINATE SYSTEM, CENTRAL ZONE, NORTH AMERICAN DATUM OF 1983. MAP PREPARED UNDER THE DIRECTION AND SUPERVISION OF:



John W. Antalovich
JOHN W. ANTALOVICH R.L.S.
12783-E

NOTE:
THE CONTOURS DEPICTED ON THIS MAP WERE COMPILED TO NATIONAL MAP ACCURACY STANDARDS BY KUCERA INTERNATIONAL INC., WILLOUGHBY, OHIO, USING PHOTOGRAMMETRIC METHODS FROM AERIAL PHOTOGRAPHY TAKEN 11-15-94. CONTOURS WHICH ARE IN HOODED OR DENSE VEGETATION AREAS ARE APPROXIMATIONS ONLY AND SHOULD BE TREATED AS "DASHED CONTOURS".

SAN XAVIER DISTRICT
PIMA COUNTY, ARIZONA
TOHONO O'ODHAM INDIAN RESERVATION

APPROVED:
TITLE:

DATE	REVISION

D.A. = 16.1 mi²
Q₂ = 852 cfs
Q₁₀ = 1932 cfs
Q₁₀₀ = 4194 cfs